



SCAN FOR RERA



Developers: Agile Real Estate Ltd. Site Address: Kalpataru Parkcity, Kolsheer Road, Thane (W), Maharashtra, India – 400 607. Head Office: 101, Kalpataru Synergy, Opp. Grand Hyatt, Santacruz (E), Mumbai 400 055. | Tel.: 022 3064 3065 | Email: sales@kalpataru.com | Website: www.kalpataru.com.
Sunrise : OC Received for all towers. Eternia is registered as Sector 5 - Wing A with MahaRERA Reg. no. P51700020201, Sector 5 - Wing B with MahaRERA Reg. no. P51700020237, Sector 5 - Wing C with MahaRERA Reg. no. P51700020196, Sector 5 - Wing D, E and F with MahaRERA Reg. no. P51700016308, Sector 5 - Wing G and H with MahaRERA Reg. no. P51700020175, Sector 5 - Wing J and K with MahaRERA Reg. no. P51700020264. For details please visit <http://maharera.mahaonline.gov.in>. Sunrise and Immensa are secured with Housing Development Finance Corporation Limited. Eternia is secured with PNB Housing Finance Limited. The No Objection Certificate/Permission would be issued, at the relevant time, if required. All images are strictly for illustrative and representational purpose. The actual image(s)/view(s) have been modified/enhanced for visual, illustrative and creative purposes. *Bank moratorium & eligibility conditional. *Terms, conditions & taxes apply.

Elevate. Excellence. Energize. Emerge. Experience. *Eternia.*



ETERNIA | KALPATARU
PARKCITY®



Representational Image

THE POTENTIAL OF
INFINITE POSSIBILITIES.
OR, SIMPLY PUT,
LIFE AT ETERNIA.

EXPLORE EACH MOMENT.

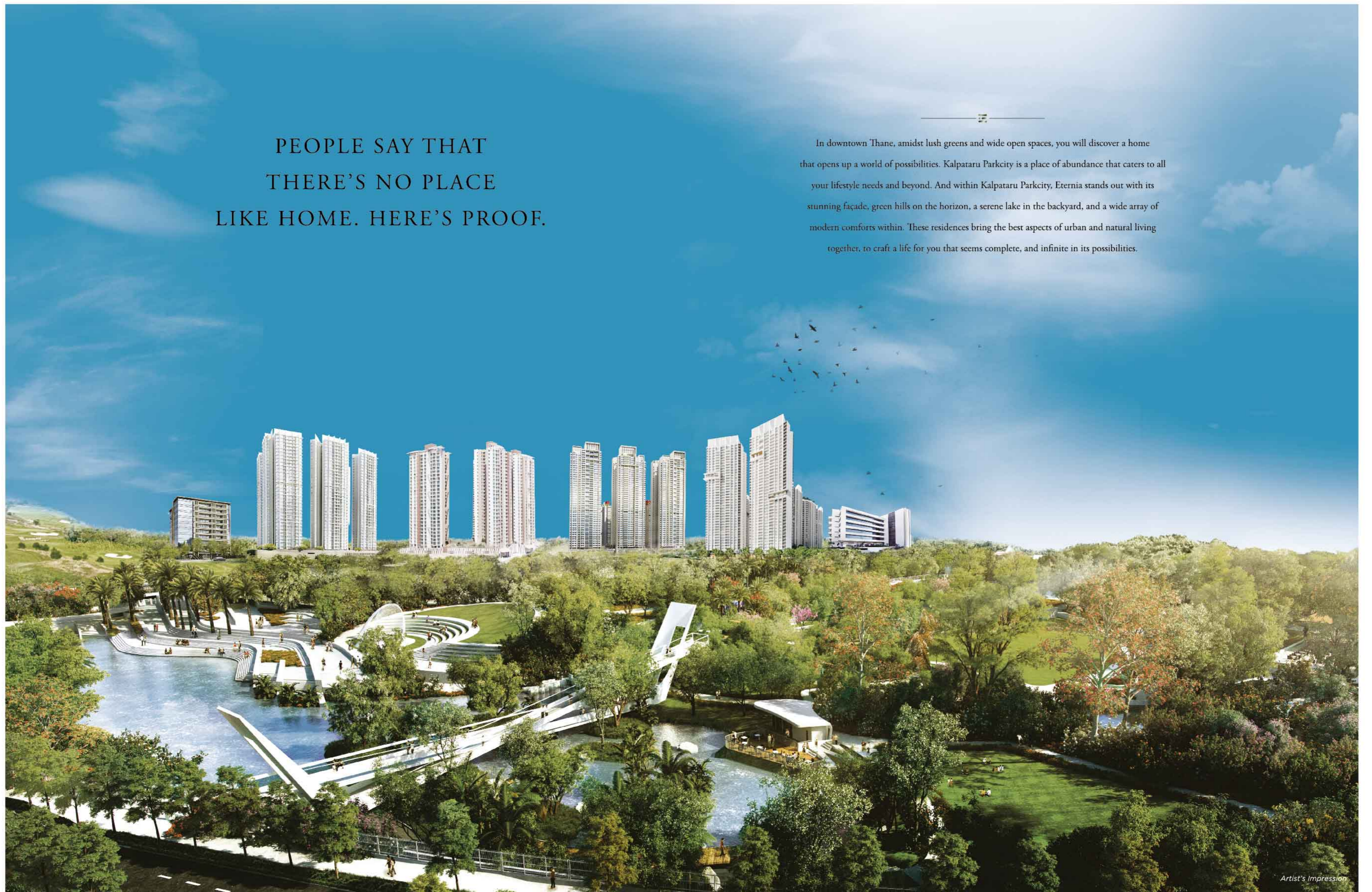
Explore the world. That is how life should be lived. From the moment one wakes up to the moment one sleeps. Nothing should stop this flow of joys, memories and fun.

When nature, the amenities of urban living and a beautiful home come together,

life is lived to the fullest.

PEOPLE SAY THAT
THERE'S NO PLACE
LIKE HOME. HERE'S PROOF.

In downtown Thane, amidst lush greens and wide open spaces, you will discover a home that opens up a world of possibilities. Kalpataru Parkcity is a place of abundance that caters to all your lifestyle needs and beyond. And within Kalpataru Parkcity, Eternia stands out with its stunning façade, green hills on the horizon, a serene lake in the backyard, and a wide array of modern comforts within. These residences bring the best aspects of urban and natural living together, to craft a life for you that seems complete, and infinite in its possibilities.





I N D E X

ELEVATE

- | Thane
- | Location map
- | Connectivity
- | Master planners
- | Principal architect
- | Landscape consultant
- | Parkcity layout
- | Podium space
- | Complex layout
- | Township greens layout

EXCELLENCE

- | Eco-deck layout

ENERGIZE

- | Podium amenities
- | Leisure amenities
- | Active amenities
- | Lifestyle amenities

EMERGE

- | Sun and wind
- | Lobby
- | Homes
- | Balconies and views
- | Living rooms
- | Bedrooms
- | Kitchen
- | Sustainability
- | Project specifications

EXPERIENCE

- | Township green amenities
- | GCP
- | 4 zones at GCP
- | Legacy
- | Kalapataru landmarks
- | Awards



ELEVATE

into

a

new

life.

IN A SMART CITY,
LIVE IN A SMARTER TOWNSHIP.

THE SMART LIFE IS A CONNECTED LIFE.



Located in Kalpataru Parkcity, a 100+ acre township in the heart of downtown Thane, Eternia brings together the immense advantages of this location to create a seamless life for its residents. A new age smart city offering the best of modernity, work and leisure, Thane also offers multiple modes of connectivity through Kolshet Road, which is fast becoming the hub of active living and offers great value for money. With Thane being a compact city and Central Thane bursting at its seams, Kolshet Road has now become the centre of the next big change in this area. This is a location that is a perfect mix of Thane and Downtown Thane, and brings the best of work, life, commerce and leisure, *right to your doorstep.*



BEAUTIFUL UPVAN LAKE THANE

Representational Image



Connectivity:

Proposed Infrastructure

- Wadala-Kasarvadavali Metro Line 4
- Thane-Bhiwandi-Kalyan Metro Line 5
- Balkum Metro Station: 1.8 km
- Kailash Metro Station: 2.2 km
- Kasarvadavli-Gaimukh Metro Line 4A
- RORO Service connecting Thane to Mumbai & Navi Mumbai
- Thane-Borivali Tunnel Road

Current Infrastructure

- Ghodbunder Road: 1.5 km
- Thane-Bhiwandi Road: 1.8 km
- Eastern Express Highway: 2.2 km
- Kapurbawdi Junction: 2.4 km
- LBS Marg: 5.2 km

Schools

- CP Goenka International: 2.4 km
- Holy Cross: 3.4 km
- Vasant Vihar: 3.9 km
- Smt. Sulochnadevi Singhanian: 4.1 km
- Hiranandani Foundation: 4.6 km

Hospitals

- Jupiter: 3.3 km
- Hiranandani: 3.5 km
- LOK: 3.6 km
- Lifecare: 4.7 km

Commercial Spaces

- Tata Consultancy Services: 3.7 km
- Oracle Business Hub: 6.5 km
- Wagle Industrial Estate: 7.3 km

Malls

- Wonder: 2.3 km
- Viviana: 3.5 km
- Korum: 4.4 km

Supermarkets

- D Mart: 2.3 km
- More: 2.4 km
- Hypercity: 4.4 km
- Star Bazaar: 5.8 km

Arts & Culture

- Kala Bhavan: 2.3 km
- Dr Kashinath Ghanekar Auditorium: 4 km
- Gadkari Rangayatan: 5.5 km

EXPERIENCE THE INFINITE
POSSIBILITIES
OF SEAMLESS LIVING.
EXPERIENCE LIFE AT ETERNIA.

— — — — —
MULTI-MODAL CONNECTIVITY TO EVERYWHERE.

Never worry about the daily commute again. Multiple modes of connectivity within Thane and to Mumbai make it a thing of joy. With 2 metro stations within walking distance, 2 arterial roads within minutes, and proposed infrastructure that includes multiple metro lines, a new railway station and the Thane Borivali Tunnel Road, life at Eternia gives you the seamless freedom to go anywhere you wish, without worrying about traffic jams or excessive travel stress.



2 METRO LINES FOR CONNECTIVITY



Representational Image

A LIFE OF
EXCELLENCE.

ORCHESTRATED

BY INFINITE POSSIBILITIES.



Artist's Impression



THE FINEST MINDS FOR THE FINEST HOMES

THE WORLD'S BEST. THINKING ABOUT ONE PERSON. YOU.

We've worked with some of the best minds in the world to create Eterna. Being a part of the township, and one of the larger phase in Kalpataru Parkcity, Eterna represents the best global lifestyle that is accessible to you. And all of this is possible only because of the passion and the detailing of our partners in architecture, landscaping and design.

PLANNING FOR YOU

- Traffic: Space for public transport means the township will be traffic free even 20 years from now.
- Open space: Optimal development ensures a 70% open space ratio for you.
- A place of worship and an ICSE school too lie right within the gates.

MASTER PLANNER: AEDAS, SINGAPORE

*“With Kalpataru Parkcity we have envisioned a place that feels like
a space where people and nature coexist in perfect harmony;
a destination that provides a new lifestyle choice.”*

Aedas creates successful contemporary urban environments
by designing places that are planned for a sustainable future.

At Eternia in Kalpataru Parkcity, they have envisioned
a space that is more than just a home. It's a lifestyle destination.

PAST PROJECTS

Hong Kong West Kowloon Terminus, Olympia 66,
The Unilever office in Jakarta, and The Star in Singapore
among many others.



Actual Image



HB DESIGN - MULBERRY GROVE, BANGKOK

Actual Image

PRINCIPAL ARCHITECT: HB DESIGN, SINGAPORE

"To design a living space that lifts the human spirit; that's another level of aspiration; that's Kalpataru Parkcity."

With an aim to design spaces that lift the human spirit, HB Design is headquartered in Singapore. HB Design's work has always been decorated by awards across the globe. Just recently they won 2 awards at Thailand Property Guru Asia Property Awards, 2019. Their property, 'The Strand', won the Best Luxury Condo Architectural Design at the 2018 Property Guru Thailand Property Awards.

PAST PROJECTS

Whizzdom Connect in Bangkok, The Unixx and The River in Bangkok among many others.

LANDSCAPE CONSULTANT: ONE LANDSCAPE, HONG KONG

"In Eternia at Kalpataru Parkcity, we want to positively impact lives through inspired and functional landscape design that enhances quality of life for the residents of the township and the people visiting it."

ONE's design philosophy of 'land-culture' is to draw inspirations from the culture and texture of the origin of site and develop it into one 'big idea' that transpires into physical spaces and tangible design elements experienced by visitors and users. This 'big idea' becomes the source of a series of further ideas that bring a unique identity to the project.

PAST PROJECTS

Huangshan Banyan Tree Resort, China, Titan Headquarters,
Bengaluru, Central Park, Vietnam



Actual Image

TITAN HEADQUARTERS, INDIA

ENTER THE REALM OF TRANQUILITY AND SERENITY.

As you pass through the magnificent gates of Kalpataru Parkcity, walk through the wide, tranquil tree lined roads and you will be greeted by a beautiful 20+ acre park on the right, and the tall, stunning façade of Eternia on the left. Situated on the banks of a serene lake, these homes offer the largest podium in Kalpataru Parkcity along with wide open spaces you would love to get lost within.



LEGEND

- 1. PLACE OF WORSHIP
- 2. SUNRISE
- 3. GRAND CENTRAL PARK
- 4. HIGH STREET RETAIL AND F&B
- 5. IMMENSA
- 6. ETERNIA
- 7. TOWNSHIP GREENS

DHOKALI

Not to scale | For illustration purpose only



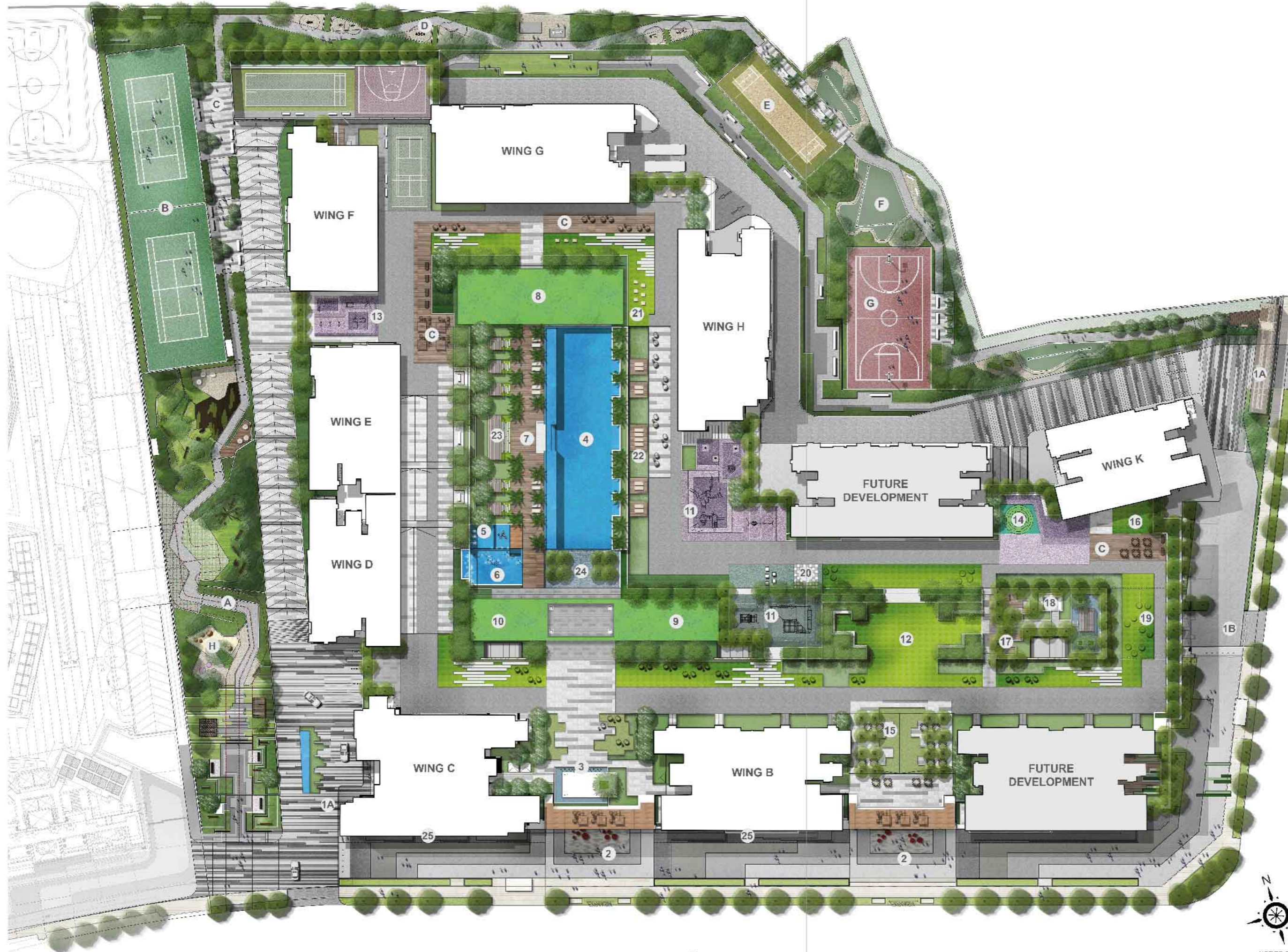
A 20+ ACRE PARK.
LANDSCAPED PODIUM GREENS.
AND UNMATCHED ABUNDANCE.
WELCOME TO LIFE AT ETERNIA.

Eternia at Kalpataru Parkcity is a home that has been crafted with an intention to refresh and reenergise the everyday. Whether it's the state-of-the-art amenities or their beautiful settings. Whether it's the spacious residences or the convenience on offer. Everything here seems in perfect tune with all your tangible and intangible needs. The serene surroundings seem postcard worthy. From a beautiful place far away. But remember, you are still in downtown Thane.

You are still right at home.

This is a world of infinite possibilities. And all you need to do to unlock them, is to move in.

Complex Layout



LEGEND

- 1A. ENTRY / EXIT
- 1B. EXIT
- 2. RETAIL PLAZA

AMENITIES AT ECO DECK LEVEL:

- 3. VIEWING DECKS
- 4. SWIMMING POOL
- 5. TODDLER'S POOL
- 6. FAMILY POOL
- 7. POOL DECK
- 8. POOL SIDE LOUNGE CUM CAFE
- 9. FUNCTION ROOM
- 10. CHANGING ROOM
- 11. CHILDREN PLAY AREA
- 12. MULTI FUNCTION LAWN
- 13. TODDLER'S PLAY AREA
- 14. MAZE GARDEN
- 15. EVENT PLAZA
- 16. HERB GARDEN
- 17. TREE BOSQUE
- 18. READING GARDEN
- 19. SLOPED LAWN
- 20. CHESS COURT
- 21. MEDITATION AREA
- 22. YOGA DECK
- 23. FEATURE PAVILION
- 24. FEATURE REFLECTIVE POUND
- 25. GCP FACING PREMIUM LOUNGE

OTHER AMENITIES AT ECO DECK STILT LEVEL:

- CHILDREN ACTIVITY AREA
- MINI THEATRE
- CRECHE

OTHER AMENITIES AT PODIUM 2 LEVEL:

- BUSINESS CENTRE
- FUNCTION HALL
- MUSIC ROOM
- LEARNING CENTRE
- SPA

FITNESS CENTER & MULTIPLE ACTIVITY ROOM FOR:

- LOUNGE
- POOL TABLE
- TABLE TENNIS
- CARROM
- FOOSBALL
- CHESS
- VIDEO GAMES AND ENTERTAINMENT ROOM
- BOARD GAMES
- DARTBOARD
- RECEPTION LOUNGE

OTHER AMENITIES AT PODIUM 1 LEVEL & GROUND LEVEL

- GYMNASIUM
- SQUASH COURT
- CRICKET TURF
- BASKETBALL COURT
- MULTI-SPORT AREA

SHARED AMENITIES OF PARKCITY

- A. JOGGING PATH / FITNESS TRACK
- B. PLAY COURT
- C. SEATING SPACE
- D. OUTDOOR FITNESS ALCOVE
- E. BOX CRICKET COURT
- F. PUTTING GREEN
- G. MULTIPURPOSE PLAY COURT
- H. KIDS PLAY AREA

OTHER SHARED AMENITIES AT LOWER GROUND LEVEL:

- BADMINTON COURT
- TABLE TENNIS
- SQUASH COURT

3.7 acres of Podium with 2.4 acres of Central Green Gateway of India.

Maximum amenity area per resident in Thane.

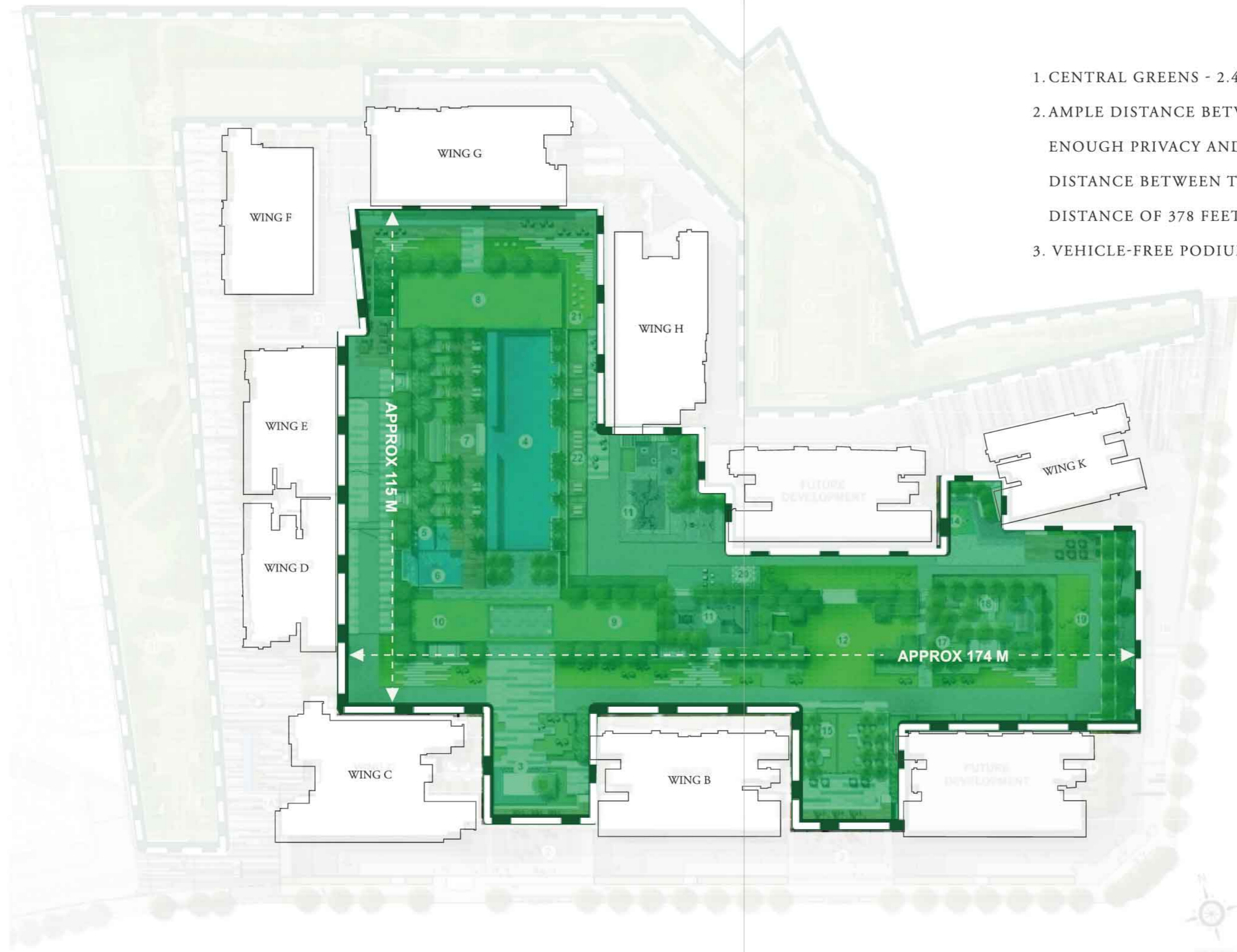
Grand Central Park | Lake

Disclaimer - Amenities in Township Greens are shared between Immensa and Eternia residents.



TOWNSHIP GREEN

2 ACRE TOWNSHIP GREENS.
BECAUSE THERE'S NOTHING LIKE
TOO MUCH GREENERY OR TOO
MANY AMENITIES.



1. CENTRAL GREENS - 2.4 ACRES
2. AMPLE DISTANCE BETWEEN THE BUILDINGS ENSURES ENOUGH PRIVACY AND VENTILATION. FROM A MINIMUM DISTANCE BETWEEN TOWERS OF 131 FEET AND A MAX. DISTANCE OF 378 FEET.
3. VEHICLE-FREE PODIUM

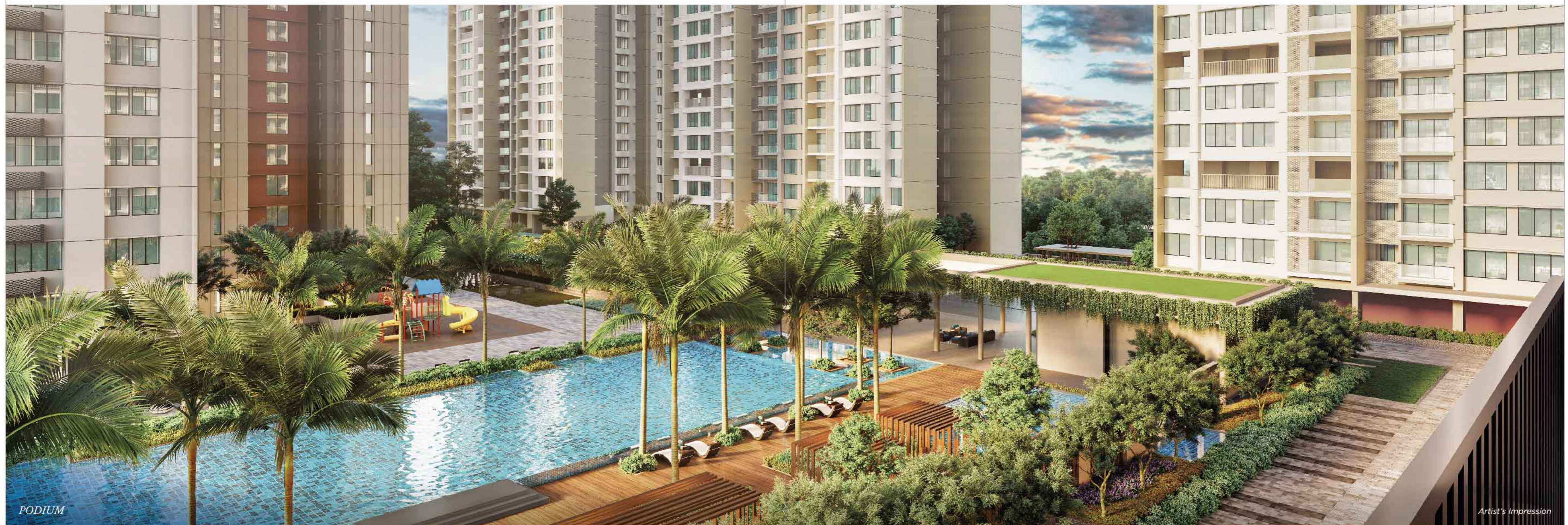
ECO-DECK

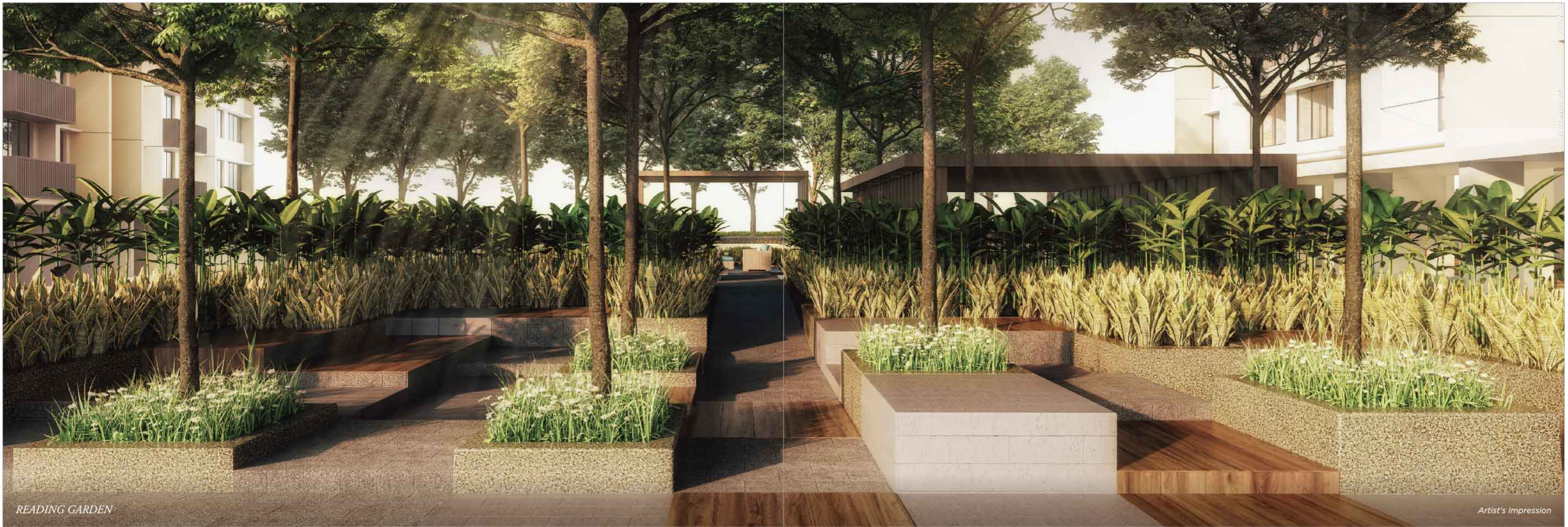
MAXIMUM AMENITY AREA PER RESIDENT IN THANE.

Energize with new activities.

ONE OF
PARKCITY'S LARGEST PODIUMS.
AND YOUR PERSONAL
PLAYGROUND.

Encompassing an area of around 3.7 acres, the podium at Eterna occupies a space as big as the one around the Gateway of India. With expansive Central Greens spread over 2.4 acres and Township Greens spread over 2 acres, this beautiful development offers plenty of room for you to indulge in. Along with that, ample distance between the buildings ensures privacy and adequate ventilation. Eterna also boasts of the maximum amenity area per resident in the entirety of Thane. The vehicle free podium also ensures peace and quiet for residents.





READING GARDEN

Artist's Impression

A MOMENT OF SILENCE
AMIDST ACRES
OF SERENITY.



LEISURE AMENITIES



Getting lost within words is easy when the setting is so serene. The Reading Garden at Eternia is one of the leisure amenities where you can take your mind off amidst peace, quiet and tranquility. So if you ever feel like making a quick getaway close to home, you know the place to go.

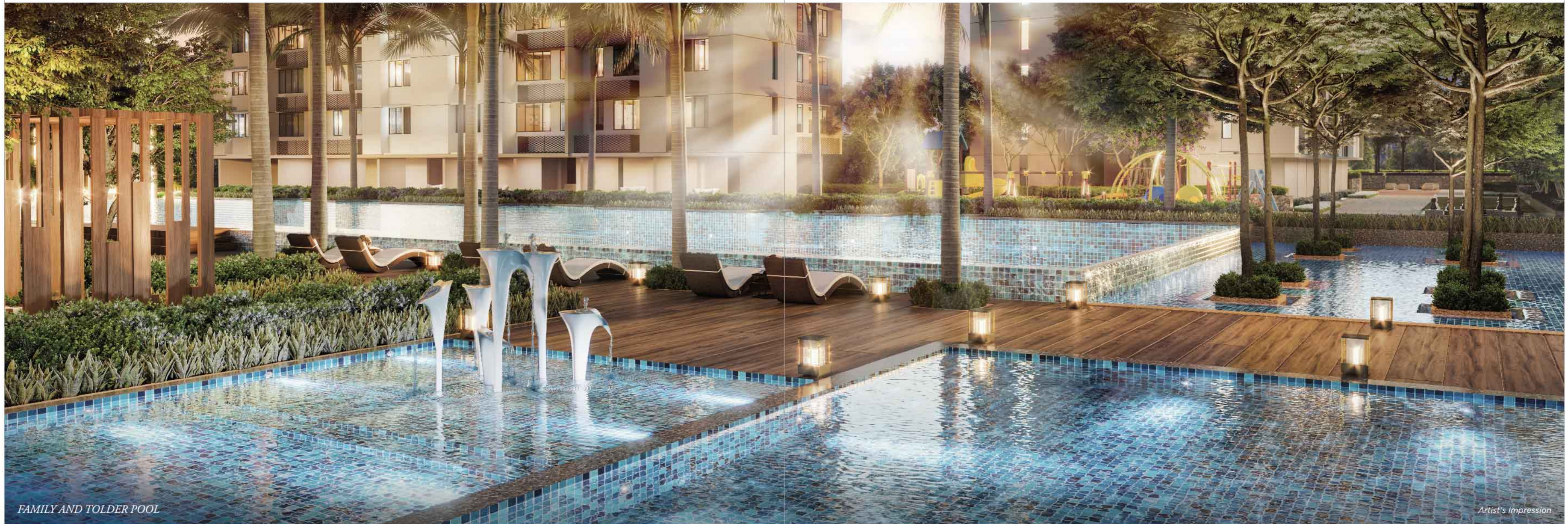
- Herb garden • Reading garden • Viewing decks • Tree bosque
- Chess court • Maze garden • Meditation area • Sloped lawn

AN OLYMPIC SIZED
SWIMMING POOL.
BECAUSE LIVING LARGE
IS LIVING WELL.

ACTIVE AMENITIES

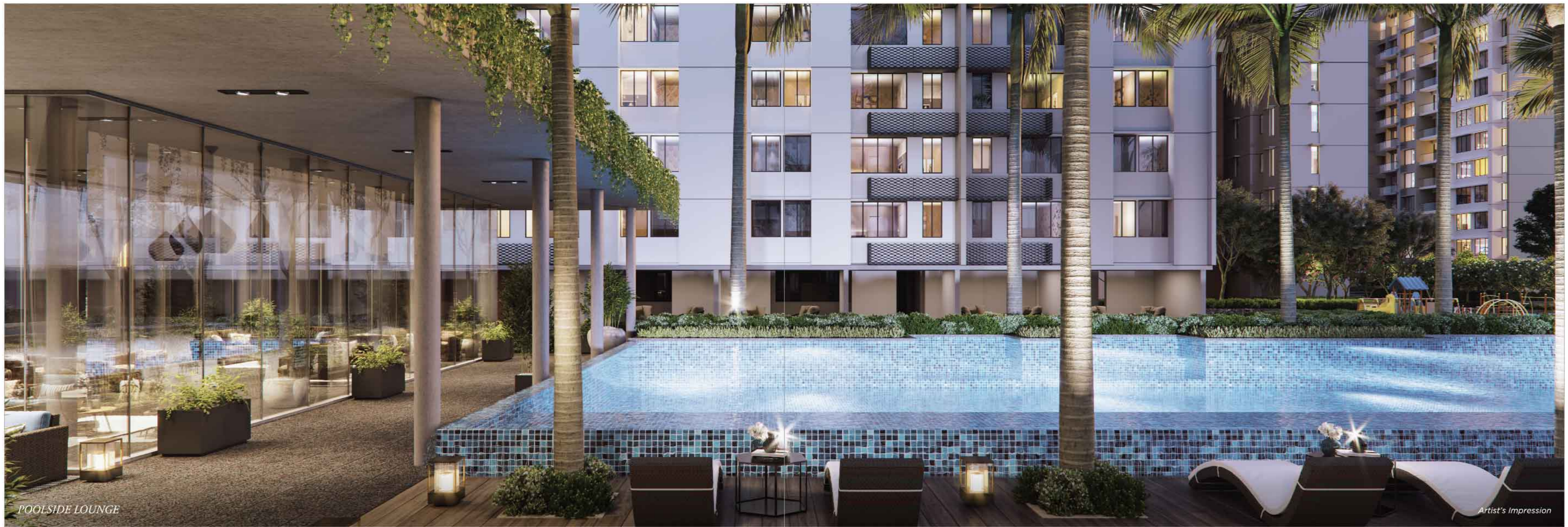
Imagine a life where you can relax with your feet in the soothing water after a long day of work. Imagine a place where even your kids can frolic about and splash around in. Eternia has state of the art swimming pools you and your loved ones can indulge in with time and freedom.

- Gym with various fitness zones • Squash court • Swimming pool with pool deck
- Family pool • Toddler's pool • Fitness centre • Multiple activity room
- Children's play area • Yoga deck



FAMILY AND TOLDER POOL

Artist's Impression



POOLSIDE LOUNGE

Artist's Impression

THE PERFECT SETTING,
FOR MORE THAN
PERFECT EVENINGS.



LIFESTYLE AMENITIES



The lifestyle amenities at Eternia have been crafted with a lot of thought and careful consideration. Like our Poolside Lounge where you can relax with a drink after a refreshing dip. Or find a space to mingle with a community full of like-minded individuals who share this wonderful life with you.

- Spa • Poolside lounge cum cafe • Function hall • Reception lounge
- Music room • Event plaza

EMERGE



discover your space.



SPACIOUS APARTMENTS WITH DECKS

Representational Image

THE SUN
AND
THE WIND.
OUR MOST
IMPORTANT
PLANNING
FEATURES.

From the interior design and the spatial arrangement of the towers, to the open spaces, facade design and window placement, every aspect of construction at Eternia has been carefully considered and thought through to ensure ample cross ventilation and a general sense of space and openness with the homes. The residences here have been designed after a detailed analysis of the sun and shadow paths, which ensures that there is maximum natural light and increased energy efficiency. All these intelligent features come together to create a life for you that feels thoughtful and holistic.



A GRAND ENTRANCE
THAT TRULY DOES JUSTICE
TO THE GRAND LIFE INSIDE.

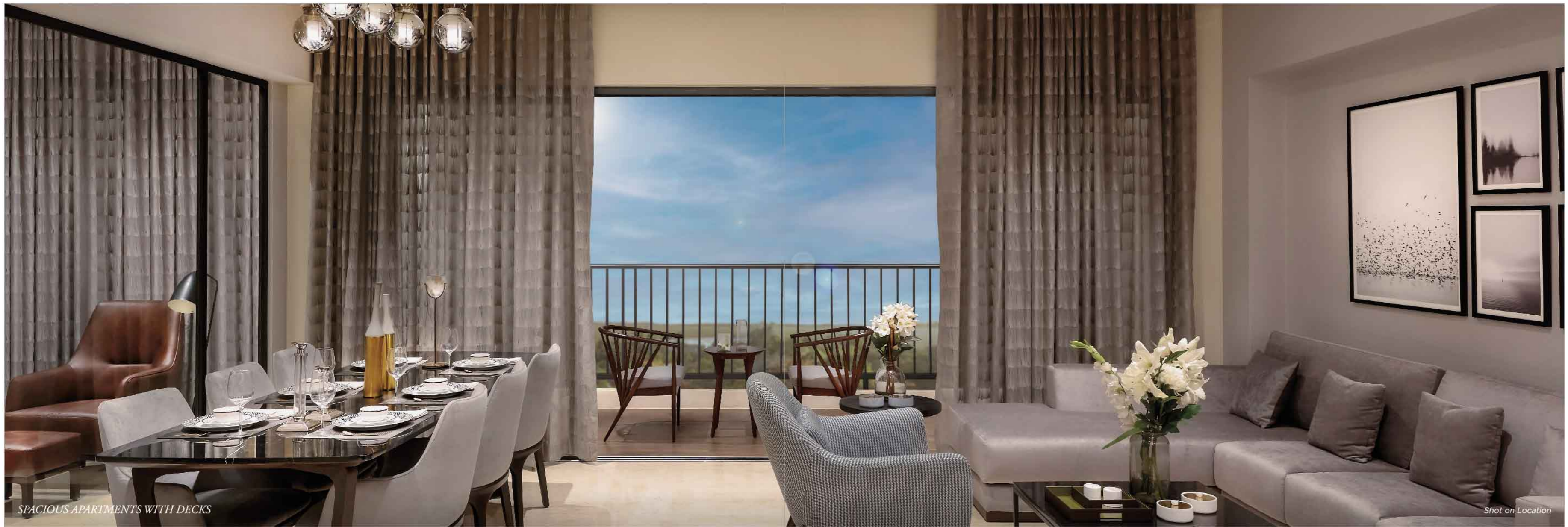
— — — — —
Step into the world of infinite possibilities, with style. High ceilings, stunning design,
a luxurious ambience, everything about the lobby in Eternia sets it apart from the rest.

This is a welcome reserved for a select few, like you.



LUXURIOUS INTERIOR LOBBY

Representational Image



EXPANSIVE SPACES.
LAVISH HOMES.
AND A NEW PERSPECTIVE
ON LIVING WELL.

The residences at Eternia have been created with your comfort and well being as a priority. Large windows, cross ventilated rooms, natural light, every aspect is geared towards providing you the ideal living experience. These homes also come in a variety of layout options that appeal to varied tastes and preferences.

VIEWS YOU WILL LOVE
GETTING USED TO.

— — — — —

The 2 & 3 bed residences at Eternia come with wide balconies that have stunning views of either the GCP or of the beautifully landscaped podium. In either case, when these views accompany your morning cup of tea, or coffee, as you prefer, every day is a joy to wake up to.



STUNNING VIEWS

Representational Image



LIVING ROOM

Representational Image

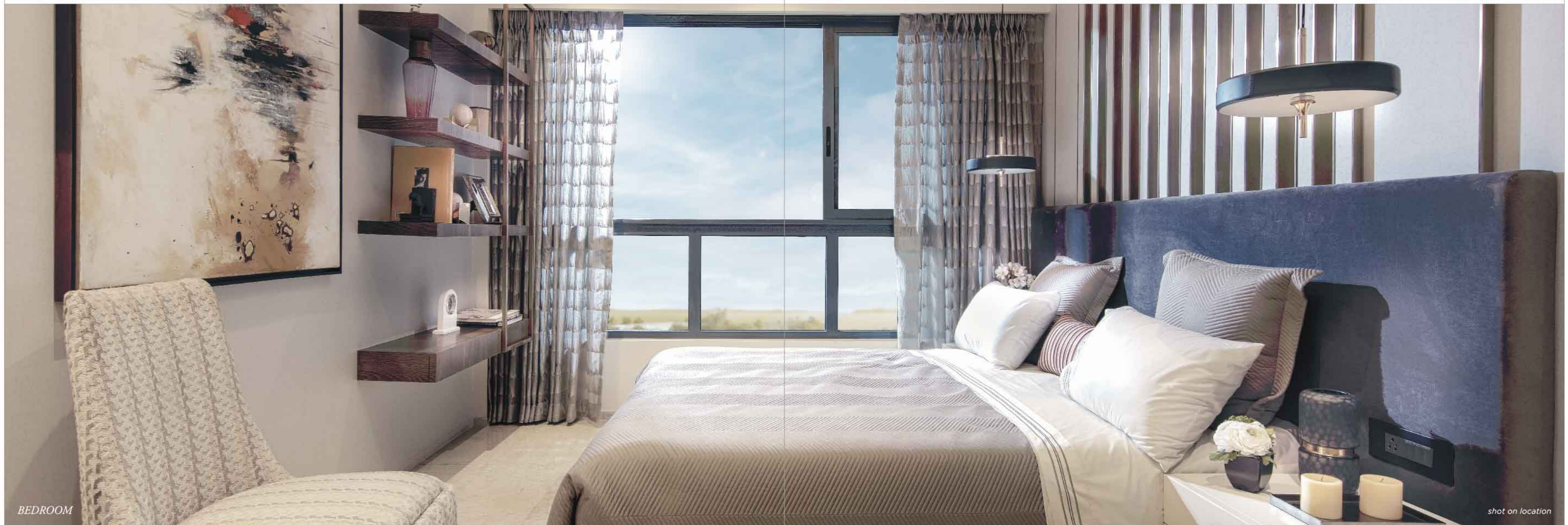
THE REASON EVENINGS WERE CREATED.

Of course, a home is a family's private space. But one always welcomes the friends one loves into it.

The living rooms in the homes at Eternia have been built along generous lines and with the finest materials and refined design thinking. The flooring, the lighting, the colours on the walls; everything has been chosen to enhance your social life.

AND JUST IN CASE YOU NEED IT,
YOUR OWN PRIVATE HAVEN.

Whether you call them sanctuaries or havens – the bedrooms at Eternia are designed around optimal furniture layouts and with niches for wardrobes to ensure comfort. Optimally located in corners of the homes, the bedrooms ensure that your privacy is never disturbed when you need your solitude.





AN ORGANISED KITCHEN ZONE.

shot on location

EVEN YOUR TASTEBUDS WILL
FIND LIFE EXCITING HERE.

A WELL-LOCATED KITCHEN, RIGHT NEXT TO THE DINING AREA.

— — — — —
Your family loves your cooking. Especially when it's piping hot. Our kitchens are located right next to the dining areas so that giving your family their favourite meals is easy.

With built in utility areas right next to the kitchen, you will find storage easy too.

It's time to bring out the chef in you.



Representational Image

HOMES DESIGNED TO BE EFFICIENT, AND ENVIRONMENTALLY CONSCIOUS.



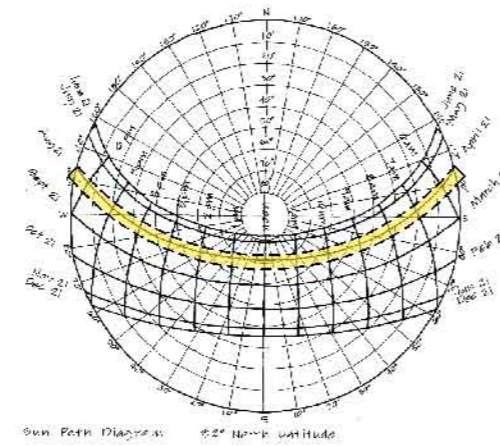
The residences at Eterna have been designed not just for the present, but for a sustainable future too. With efficiency in design, thorough planning and proper execution, we have created a world that exists in perfect sync with nature.

Working in sync with it, not against.

- SUN AND SHADOW PATH ANALYSIS
 - VIEW OPTIMIZATION
 - SMART SPACE PLANNING
 - AMPLE PARKING
 - CLOSER TO NATURE
 - SAFE & SECURE
 - ULTRA-DURABLE DOORS
- STRONG GLASS IN WINDOWS
 - SUSTAINABLE HOMES
 - ECO-FRIENDLY PRACTICES
- EFFICIENT PLUMBING SYSTEM - GEBERIT SOVENT
 - MULTI-LAYERED TERRACE

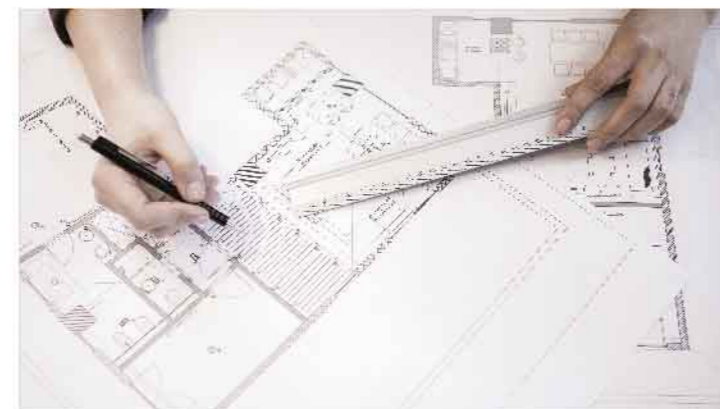
PROJECT ADVANTAGES

SUN AND SHADOW PATH ANALYSIS.
The design and spatial arrangement of the towers and open spaces in Eternia, as well as the façade design and window placement, ensure improved energy efficiency and user comfort along with optimal natural light across all residences.



VIEW OPTIMIZATION.
Intelligently designed to ensure that maximum number of apartments in Eternia get commanding views, and every apartment gets maximum privacy.

SMART SPACE PLANNING.
Eternia is a rare home where there is no wastage in the foyer, where the utility area is attached with a toilet, where there is passage between living rooms and bedrooms for privacy, and rectangular living and dining layouts for optimal space utilization.



AMPLE PARKING.
Parking with 6 levels below your home ensures that you don't have to sweat to get home after a long hard day at work. Along with that, an eco-deck level without vehicular movement ensures a better, safer space for your kids to play.



CLOSER TO NATURE.
With 4500+ trees within Kalpataru Parkcity and direct access to one of Thane's largest integrated parks, Eternia can truly claim to be one with nature.

- SAFE & SECURE.**
- Strengthened by a 6-tier security system in place
 - Designed for earthquake loads as per applicable I.S.Code
 - Carbon Monoxide exhaust fans in the parking
 - Underground tanks provided in the basement for storage of water which can also be used for fighting fire in case of emergency
 - Fire Alarm System (FAS) is employed for building common area and all basements
 - Public Address System (PAS) installed to ensure awareness during any emergency



ULTRA-DURABLE DOORS.

The main door frame is made of LVL (Laminated Veneer Lumber) which is a high durability engineered wood. Acoustic seals and intumescent strips are also used in the door frame for better prevention against adversities.



STRONG GLASS IN WINDOWS.

Heat-strengthened glass has been used in windows. Its mechanical strength is about 2X that of annealed glass and can withstand a temperature difference of 100°C along with being less susceptible to spontaneous breakage.

SUSTAINABLE HOMES.

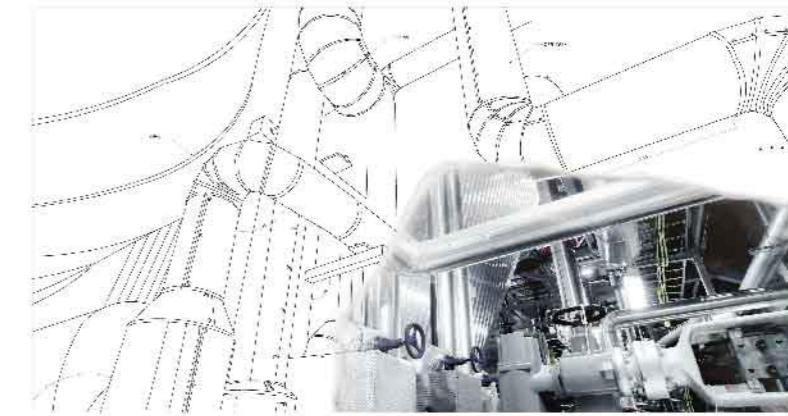
Kalpataru Parkcity has been planned to create a hub of biodiversity. The lake area and the local species of flora will attract migratory birds and also give the local fauna a natural habitat.



Representational Images

ECO-FRIENDLY PRACTICES:

- Rainwater harvesting
- Sewage treatment plant (STP)
- Water efficient fixtures
- LED lighting in all public areas
- Timers in parking lot
- Energy efficient electrical fixtures
- Solid waste management
- Optimal use of natural resources
- Wider window opening size

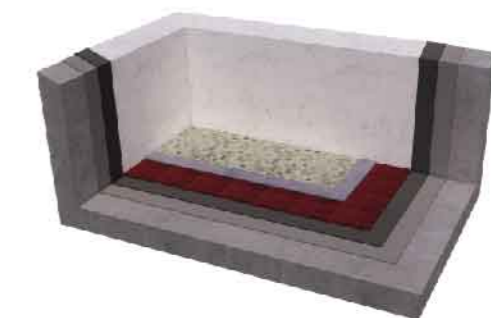


EFFICIENT PLUMBING SYSTEM - GEBERIT SOVENT.

A plumbing fitting specially designed for high-rise buildings, Geberit Sovent employs an advanced technology comprising of a flow divider, which causes water to rotate and swirl in the discharge stack, breaking the water pressure at every floor and enabling water to drain away effectively. The sovent fitting in your toilet also mitigates chances of leakage or clogging in the pipes.

MULTI-LAYERED TERRACE.

The terraces in all towers of Eternia have 4 layers;
P1 - 2 coats of Modified Polyurethane Membrane, which is an excellent resistor of water and offers permanent elasticity in all weather conditions.
P2 - Is a layer of Brickbats (half-bricks) and cement mortar which is helpful in faster drainage of water and provides heat insulation to the terrace apartments.
P3 - Mortar acts as a binding layer for the top finish. It helps level and smoothen the floor surface to lay the finish tile uniformly.
P4 - China chips are used in the form of finish tiles. They not only provide heat insulation by reflecting light but also add beauty to the terrace thus creating alluring spaces.



Representational Images



Representational Image

PROJECT HIGHLIGHTS

- Contemporary design multi storeyed wings
- Well-designed entrance experience
- Exclusive entrance lobby enhanced with premium finishes
- Multi-tier safety and security system
- Elegantly designed club facilities
- Gymnasium with state-of-art equipment
- Landscaped and pedestrian friendly eco deck level
- Swimming pools with pool deck



Representational Image

APARTMENT FEATURES

- Vitrified tile flooring adorning the apartment
- Laminate finished doors
- Gypsum finished Internal walls with low Volatile Organic Compound (VOC) Paint
- Aluminium sliding window
- Video door phone with intercom facility at apartment entrance
- Balcony with tile flooring and MS railing*

COMPLEX AND BUILDING AMENITIES

- Elevators with Auto Rescue Device (ARD)
- D.G. power backup for designated common areas
- Rain water harvesting and sewage treatment plant (STP)
- Separate drop off for each wing
- Solar heating system for water heating and/or lighting



Representational Image

BATHROOM FEATURES

- Tile flooring with designer tile dado up to door height in all bathrooms
- Premium sanitary and CP fittings
- Hot & cold water mixer for shower area
- Exhaust fan
- Water heater^



Representational Image



Representational Image

SAFETY & SECURITY FEATURES

- Building/s designed for earthquake loads as per applicable I.S. Code
- CCTV surveillance in designated common areas
- Firefighting systems
- Sprinkler system & mechanical ventilation to the basement
- Public address system
- Kitchen equipped with PNG/heat detector
- Video door phone with intercom facility at apartment entrance



Representational Image

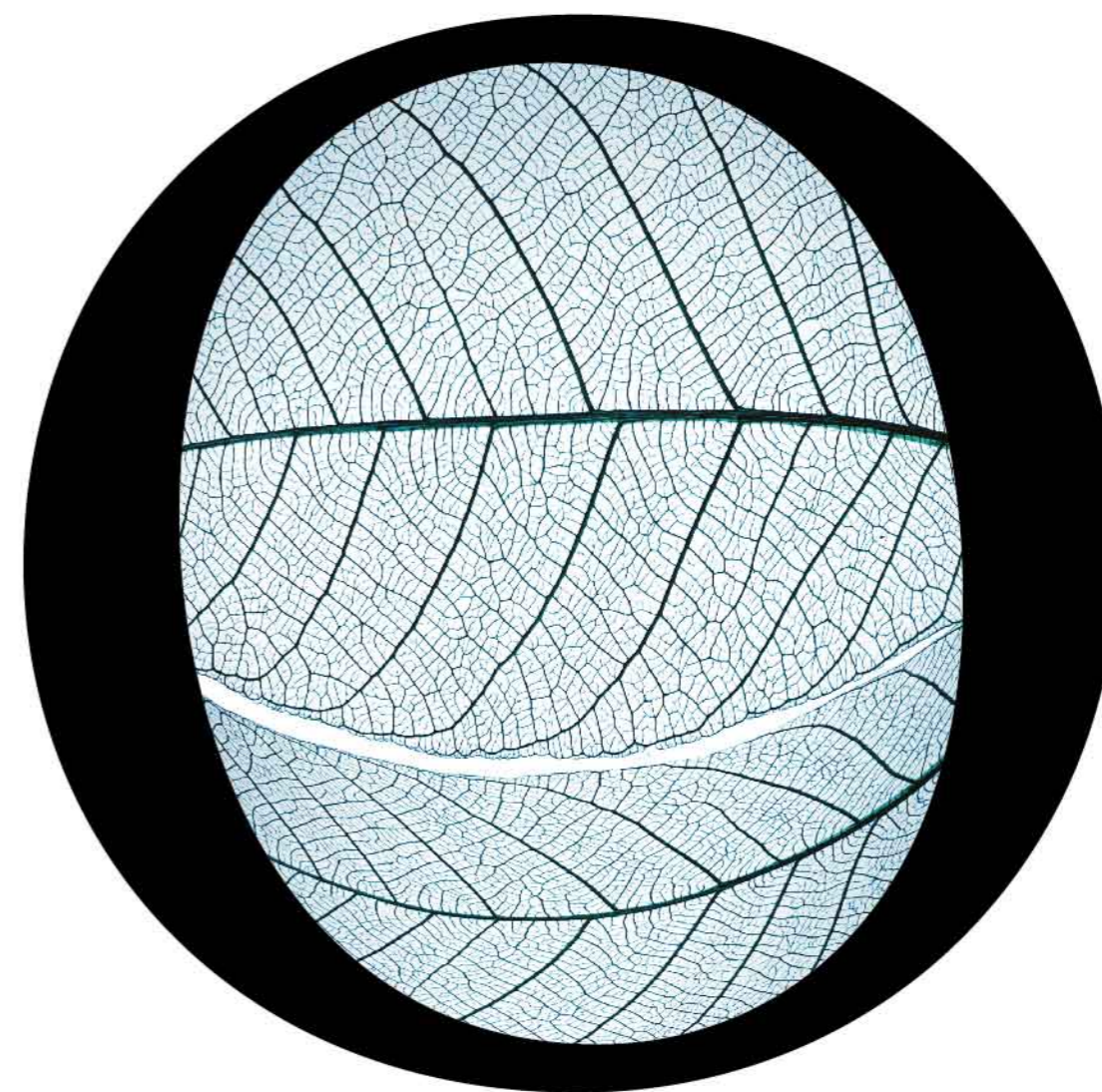
KITCHEN FEATURES

- Vitrified tile flooring
- Granite platform & additional service platform
- Designer tiled dado above platform
- Stainless steel sink
- Exhaust fan & provision for water purifier

* Applicable for apartments with balcony. Glass railing only in Wing C ^not provided in powder toilet

Experience a better

Y



U.



Representational Image

FIND A FITTER YOU.

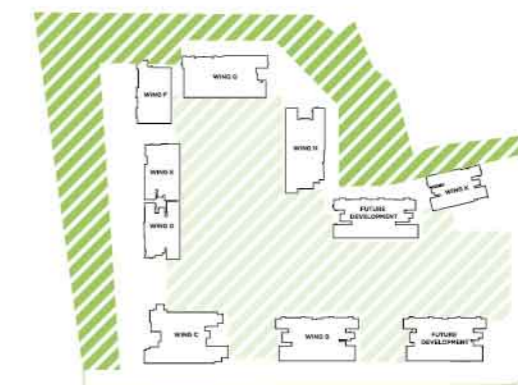
2.0 ACRE TOWNSHIP GREENS: LANDSCAPED FOR YOUR HEALTH.

Many active amenities and facilities dot the township greens adjoining Eternia at Kalpataru Parkcity. A racquet club comprising of Badminton, Squash and Tennis courts will provide residents a chance to hone their skills.* While a jogging path and an outdoor fitness alcove will allow the fitness minded an adrenaline rush. Of course, no sports amenity zone would be complete without a temple to India's most modern religion - cricket. We have a box cricket court *just for the township residents to enjoy.*



Representational Images

- Badminton*
- Squash*
- Tennis courts*
- Jogging path
- Outdoor fitness alcove
- A box cricket court
- Putting greens



*Amenities like Badminton, Squash & Tennis Court that come under Racquet Club are located in the basement but form a part of the Township Greens

MAKE LIFE A SERIES
OF EXPERIENCES.
NOT MOMENTS.

A 20-ACRE GRAND CENTRAL PARK.

The Grand Central Park at Kalpataru Parkcity is marvel of urban architecture, thoughtfully crafted on a natural canvas. With over 3000 trees producing 1.2 million pounds of oxygen in a year, along with 100+ species of birds and butterflies to regale you, this place will enhance your health, capture your heart, and your imagination too. The Grand Central Park encompasses over 20.5 acres of total area, and consists of a 3 acre lake zone, a modern sports zone with tennis courts, skating rinks among many other recreational amenities. The themed gardens here will give you a moment of solace and peace amidst surroundings that will take you away while still being at home.

20.5 acre area • 4 zones • 3 acre lake zone • Multi use pathway • Viewing decks • Lake side plaza • Amphitheatre
• Lake side restaurant • Fitness station • Multipurpose courts • Arboretum with raised boardwalk • Themed gardens
• Multipurpose lawn • Kids main playground • Restaurant/Café • Outdoor Patio • Feature flora trellis





FLORA TRELLIS

Shot on location

THE 4 ZONES
AT GRAND CENTRAL PARK.
A WORLD WHERE EVEN
NATURE FEELS AT HOME.

The Grand Central Park at Kalpataru Parkcity encompasses four thoughtfully crafted zones. Designed to provide a, holistic, fulfilling experience to residents of all ages. From recreation, to leisure, from lifestyle to life changing, the experiences on offer here are truly meant to enrich your lives in ways that few other places can.

Amidst a world of abundance and modernity, the Grand Central Park stands out as a quiet haven of nature, lifestyle and comfort. A true respite for your mind, body and soul.



JAPANESE GARDEN

Shot on location

LAKE ZONE



- 3 Acre Lake Zone
- Iconic X-Bridge
- Primary Multi-use Pathway
- Three Level Central Lake
- Viewing Deck
- Lake Side Plaza
- Stage With Feature Screen
- Lake Side Restaurant
- Amphitheatre
- Lake Fountain

THEMED GARDENS



- Mughal Garden
- Chinese Garden
- Japanese Garden
- Moroccan Garden
- Fern & Reed Garden
- Tree Canopy Deck
- Multi-purpose Lawn



Artist's Impression

KIDS PLAY ZONE



Kids Main Playground

(a) Zip Line, (b) Maze, (c) Splash Pad,

(d) Adventure Play, (e) Tot Lot,

(f) Embankment Slide, (g) Tower

Fitness Station

Restaurant / Café

Outdoor Patio

Feature Seating Area

Primary Multiuse Pathway

Convergence Ring

Feature Flora Trellis



Artist's Impression



Shot on location

SPORTS ZONE



Fitness Station

Observation Deck

Tree House And Adventure Zone

Tennis Courts

Basket Ball Court

Skate Park

Multi-level Car Park (MLCP)

Multipurpose Court on rooftop
of MLCP.

Climbing Area

Arboretum with raised
boardwalk.

Every
moment
has the
potential
to be a
nostalgic
memory.



A LEGACY THAT
PAVED THE WAY TO
INFINITE
URBAN LIVING.



NEELAMBAR 1973
NEPEAN SEA ROAD,
Built in the early 70's at a height
of 21 storeys, this was one of
Mumbai's tallest buildings and
a pioneering project in its history.



KSHITIJ 1976
NEPEAN SEA ROAD,
With its creation, this 33-storey luxury tower
transformed modern living and set lifestyle
standards for others to follow.



SRISHTI 1985
THE FIRST TOWNSHIP
IN MIRA ROAD,
it introduced the concept
of an extra half room.



**KALPATARU
HEIGHTS 1999**
CENTRAL MUMBAI,
At a height of 45 storeys, this was
India's tallest residential tower and
an icon of the Mumbai skyline.



SIDDHACHAL 1999
THANE
Mumbai & Thane's first 3 bed
economy homes.



**KALPATARU
HORIZON 2005**
WORLI,
This was the only address to have
its first residential floor starting at
the 14th level with each apartment
offering a sea view.



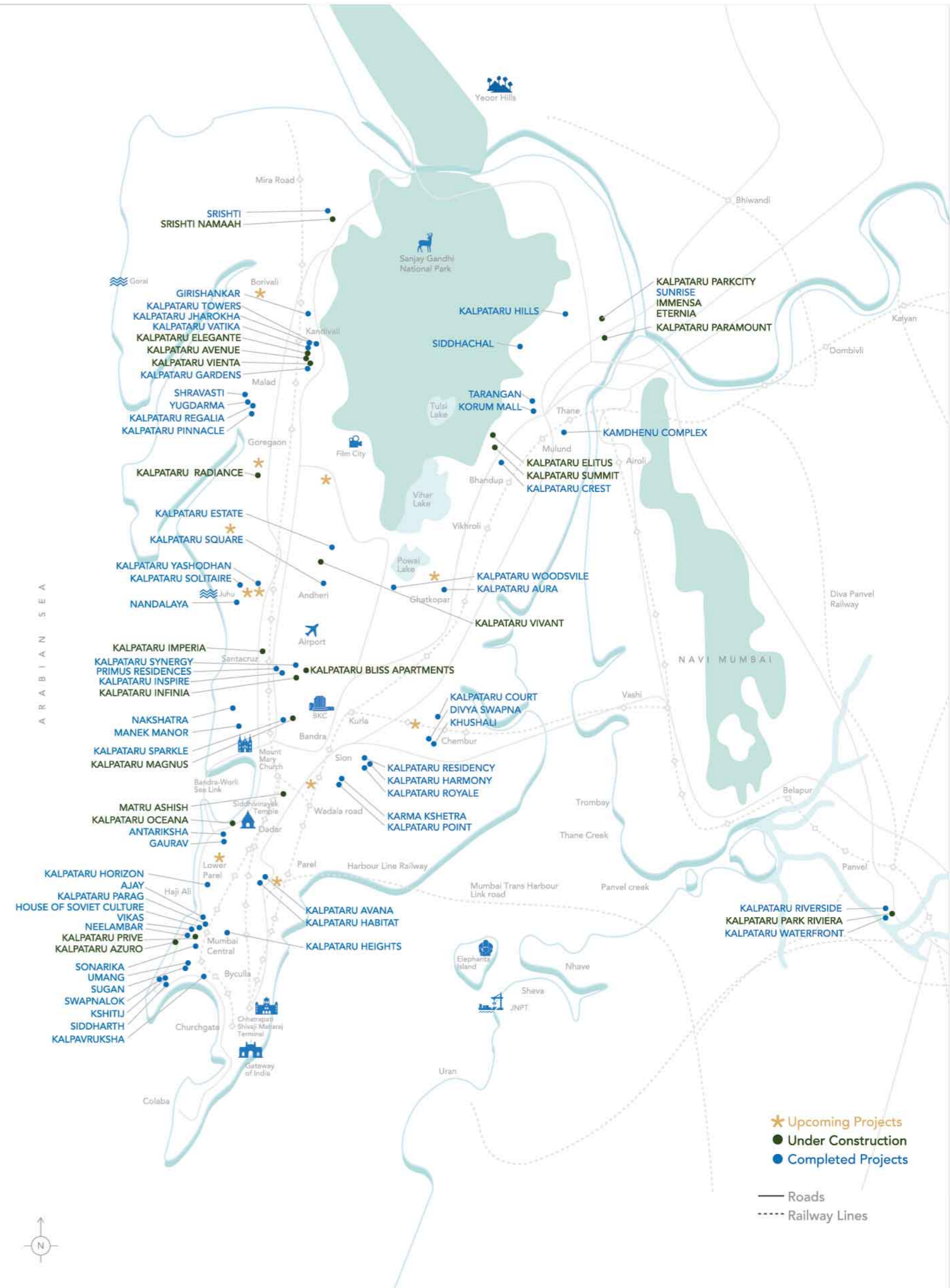
**KALPATARU
HABITAT 2005**
PAREL,
Mumbai's first rooftop putting green
and tennis courts changed the way the
city looked at recreation and living.



KORUM MALL 2010
THANE,
The most loved mall with
award winning design.

KALPATARU GROUP: CREATING LANDMARKS SINCE 1969.

From Mumbai's first genuine skyscrapers to landmark luxury projects, over the last 5 decades, the Kalpataru Group has been at the forefront of positive change in the Indian real estate landscape. Our projects have raised the standards in modern living and transformed India's urban residential landscape forever. Our greatest success however, is in the smiles and satisfaction of thousands of families who have chosen a Kalpataru Group project as their home.



OUR REAL AWARDS
ARE 19,500+
HAPPY FAMILIES.

